



Symstead, White Lane, Middle Assendon, Henley-on-Thames, RG9

£1,575,000

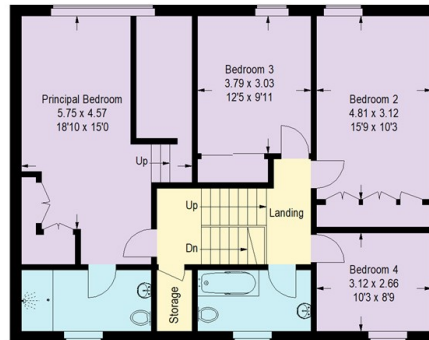
- Quiet, rural, country lane location with panoramic views over the Chiltern Hills
- 4 generous double bedrooms with views
- Principal bedroom suite with mezzanine currently used as a vanity area
- Potential for a garage or car-port STPP
- Modern home with large kitchen breakfast and utility with space for white goods
- Lower level double bedroom annex with en suite and kitchenette
- Approximately 1/3 acre with spacious driveway for several cars
- Open-plan living and dining space with vaulted ceilings and gas fire
- Versatile Family room / Gym area with wooden floors
- South-facing landscaped rear garden with split-level paved terrace for dining

Symstead, White Lane, Middle Assendon, Henley on Thames, RG9 6BD

Approximate Gross Internal Area
242.96 sq m / 2615.22 sq ft



Ground Floor



First Floor

Illustration for identification purposes only, measurements are approximate, not to scale.
FloorplansUsketch.com © 2021 (ID720587)

Directions

Viewings

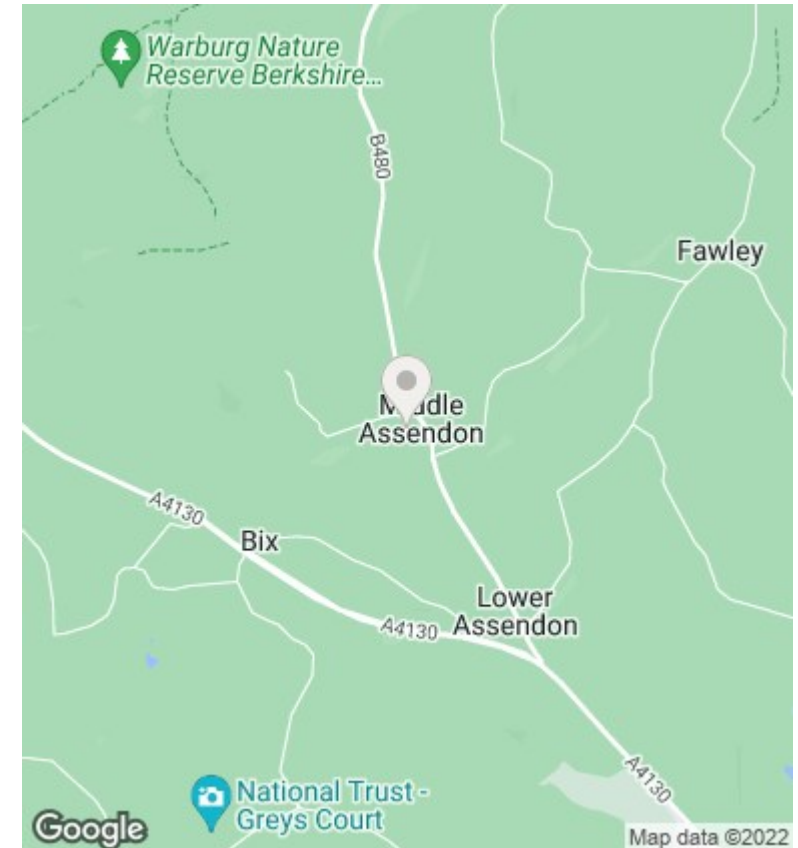
Viewings by arrangement only. Call 01491 876544 to make an appointment.

Council Tax Band

C

EPC Rating:

E



Energy Efficiency Rating		
	Current	Potential
Very energy efficient - lower running costs		
(92 plus) A		
(81-91) B		76
(69-80) C		
(55-68) D	50	
(39-54) E		
(21-38) F		
(1-20) G		
Not energy efficient - higher running costs		
England & Wales		EU Directive 2002/91/EC